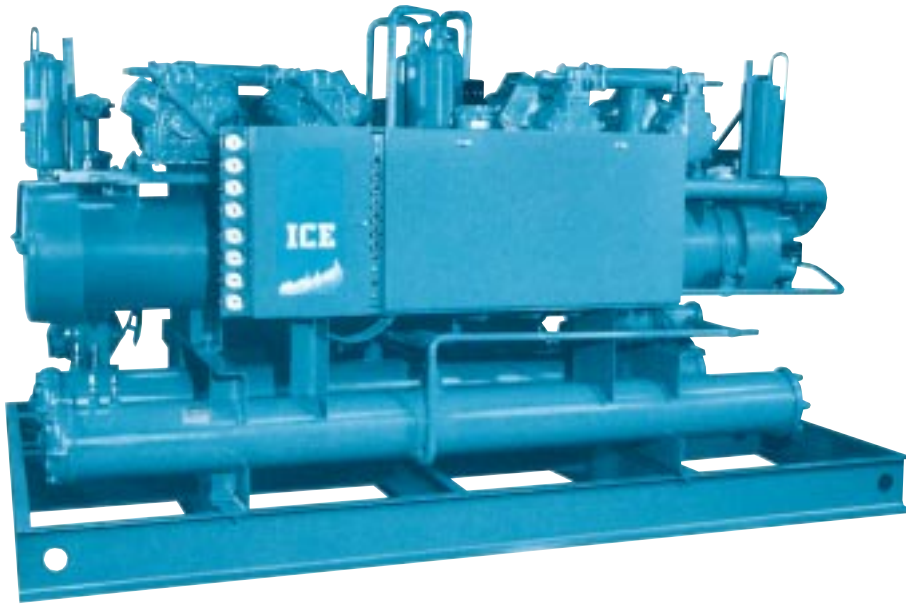


CENTRAL SYSTEM WATER-COOLED CHILLERS



WM-M Water-Cooled Chillers

ICE WM-M Series Water-Cooled Chiller Modules are engineered for industrial processing applications where 85°F cooling tower water is available. The modular design offers money-saving flexibility. You buy only the capacity your company needs today — additional modules can be added as your requirements grow. The WM-M Series features incremental capacity control that automatically adjusts to meet varying load conditions minimizing energy costs.

WM Series Chillers offer capacities from 120 to 167 nominal tons. This series is designed for processes requiring chiller fluid temperatures from +20°F to +60°F.

Budzar also designs and manufactures specialized equipment for non-standard applications. Our engineers have extensive experience in process chilling and heating applications for such industries as: rubber, paper, plastics, chemical, food, and metal working. We take the time to understand your current and future needs and design a solution targeted at high quality and fast payback.



Bulletin #33B

engineering
PRECISION

EXCELLENT RETURN ON INVESTMENT

- Each Budzar unit is designed to maximize the productivity of your process. Budzar quality and reliability provide excellent value for each dollar invested.
- Modular concept provides flexibility — modules can be added as process requirements grow, thus saving on capital expenditure and operating costs.

LOW-COST, SIMPLE OPERATION AND MAINTENANCE

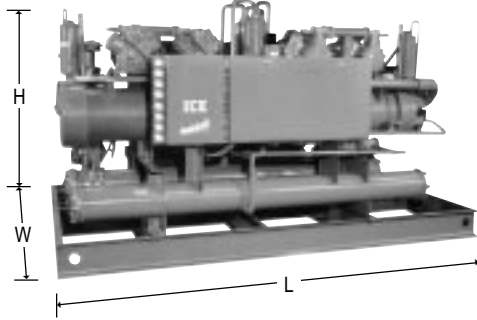
- Semi-hermetic compressors feature cylinder unloading capacity control for precise temperature control and extended equipment service life under varying load conditions.
- A.S.M.E. constructed steel shell and copper tube chiller vessels and evaporators are specifically selected for optimum performance and efficiency.
- Easy-to-monitor functions status indicators provide safe, easy operation.

QUICK AND EASY INSTALLATION

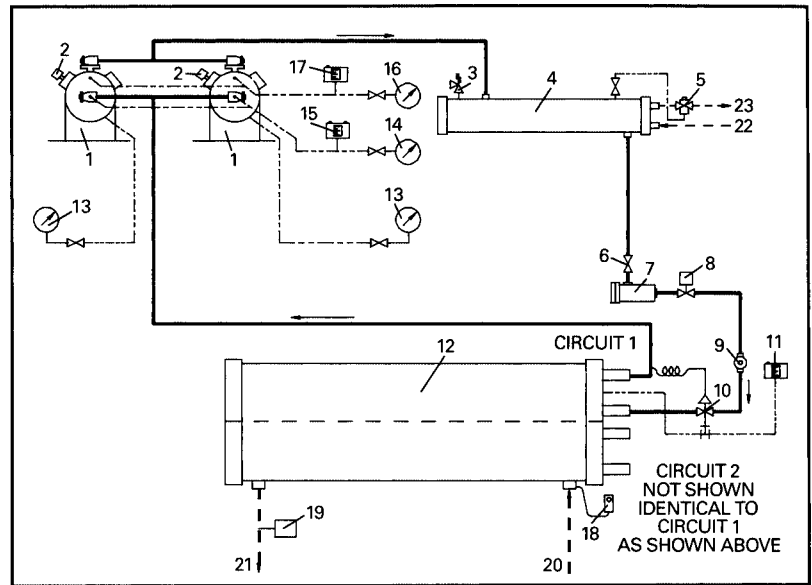
- All units are shipped with a full charge of refrigerant, ready for immediate connection to existing power and water lines.
- All units are factory tested prior to shipment.



process
TEMPERATURE
control



Model WM-130M dual circuit, four compressor water cooled unit with integral pump and tank system mounted on common skid.



- | | | |
|---|-----------------------------------|-------------------------------------|
| 1. Compressor | 8. Liquid Line Solenoid Valve | 16. High Pressure Gauge (Discharge) |
| 2. Unloader Solenoid (Opt.) | 9. Sight Glass/Moisture Indicator | 17. High Pressure Switch |
| 3. Relief Valve | 10. Expansion Valve | 18. Chiller Sequencing Thermostat |
| 4. Water Cooled Condenser | 11. Low Pressure Freeze Control | 19. Flow Switch (Field Installed) |
| 5. Water Regulating Valve (Field Installed) | 12. Chiller Barrel (Two Circuit) | 20. Process Water Inlet |
| 6. Liquid Line Service Valve | 13. Oil Pressure Gauge | 21. Process Water Outlet |
| 7. Filter Drier | 14. Low Pressure Gauge (Suction) | 22. Condenser Tower Water Inlet |
| | 15. Pumpdown Control | 23. Condenser Tower Water Outlet |

WM-M WATER-COOLED CHILLERS

MODEL NO.		WM-120M	WM-130M	WM-140M
Capacity @ 50°F ^①	TONS	120.2	131.5	142.8
Compressor -	HP	35/25 35/25	25/35 25/35	35/35 35/35
Evaporator Flow -	GPM	288.5	315.6	342.7
Chilled H ₂ O Connection -	NPT	6"	6"	6"
Nameplate Amps -	460V	206	225	244
Condenser Flow - 85°	GPM	360.6	394.5	428.4
Capacity Control -	%	100-92-85-77-68-59-49-26-0	100-93-85-72-63-54-45-24-0	100-94-87-75-59-51-42-23-0
Shipping Weight -	LBS	6060	6215	6290
Dimensions -	LxWxH	143x35x77	143x35x77	143x35x77
MODEL NO.		WM-150M	WM-160M	WM-170M
Capacity @ 50°F ^①	TONS	149.0	155.1	167.4
Compressor -	HP	35/35 35/40	35/40 35/40	40/40 40/40
Evaporator Flow -	GPM	357.6	372.2	401.8
Chilled H ₂ O Connection -	NPT	6"	6"	6"
Nameplate Amps -	460V	248	252	2603
Condenser Flow - 85°	GPM	447	465.3	502.2
Capacity Control -	%	100-94-88-72-57-49-41-21-0	100-94-88-74-55-47-38-20-0	100-94-87-75-59-51-42-23-0
Shipping Weight -	LBS	6655	6870	6980
Dimensions -	LxWxH	143x35x77	143x35x77	143x35x77

^① Capacity based upon chilling water from 60°F to 50°F with 85°F to 90°F condenser water.

Budzar Industries reserves the right to discontinue or change specifications without notice, consistent with sound engineering practice and current industrial standards.



38241 Willoughby Pkwy., Willoughby, Ohio 44094-7582
 (440) 918-0505 • Fax (440) 918-0606/918-0707
 Internet: www.budzar.com
 E-mail: sales@budzar.com